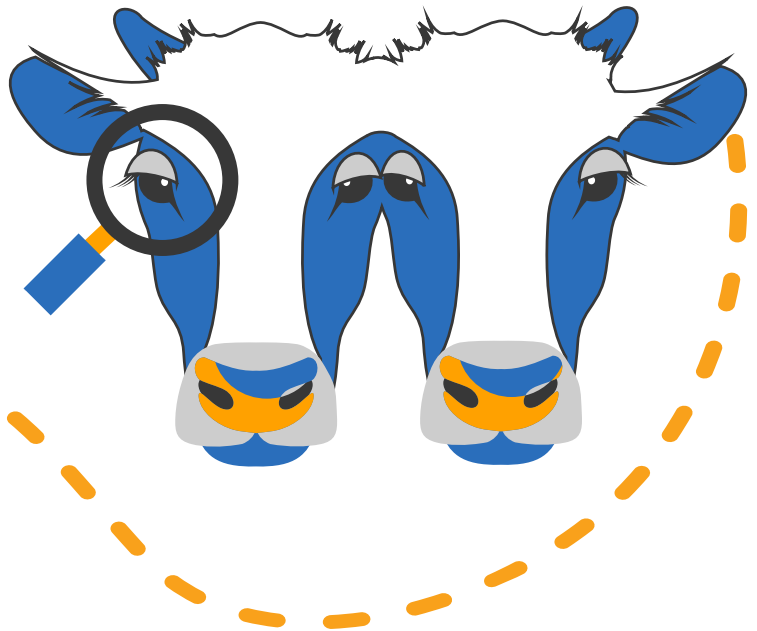


# EXPLORE HURON COUNTY!

## Family Day Bingo & Scavenger Hunt

Huron County Museum and Friends of the Museum invite you to get out and visit these local historic sites. Mark them off as you go or share photos along the way.

Tag your photos:  
@HuronCountyMuseum




### DISCOVER

### FIND

### SHARE

### LEARN

### TRY IT

<p><b>Huron Historic Gaol</b> Goderich</p> <p><i>Take an outdoor selfie behind bars</i></p>	<p><b>CNR School on Wheels</b> Clinton</p>	<p><b>Blyth Memorial Hall</b> Blyth</p>	<p><b>VanEgmond House</b> Seaforth</p>	<p><b>St. Joseph's Historical Park</b> St. Joseph's</p>
<p><b>Gairbraid, Tiger Dunlop's Tomb</b> Goderich</p>	<p><b>Bayfield Archives &amp; Heritage Centre</b> Bayfield</p>	<p><b>Cement Entrance Sign</b> Auburn</p>	<p><b>Manchester Sign</b> Auburn</p>	<p><b>Miniature Chapel, Masonic Park</b> Brussels</p>
<p><b>Monument to RCAF Station</b> Centralia</p>	<p><b>Londesborough United Church</b> Londesborough</p>		<p><b>Ball's Bridge</b> Baseline Road</p>	<p><b>Radar Monument</b> Clinton</p>
<p><b>Hay Town Hall</b> Zurich</p>	<p><b>The Founding of Friedsburg Sign</b> Dashwood</p>	<p><b>The Train Station, Old Mill</b> Blyth</p>	<p><b>Huron County Museum</b> Goderich</p> <p><i>FREE Family Day admission!</i></p>	<p><b>Old Town Hall</b> Exeter</p>
<p><b>Alice Munro Literary Garden</b> Wingham</p>	<p><b>Ghost Town Sign</b> Wroxeter</p>	<p><b>RAF Air Navigation School Memorial</b> Port Albert</p>	<p><b>Woollen Mill, Benmiller Inn</b> Benmiller</p>	<p><b>Kingsbridge Centre</b> Kingsbridge</p>

\*While some sites are closed in winter, check them off if you have ever visited *OR* take and share a photo from outside.